



# Makita Werkzeug Ges.m.b.H.

Airportstr. 4, 2401 Fischamend

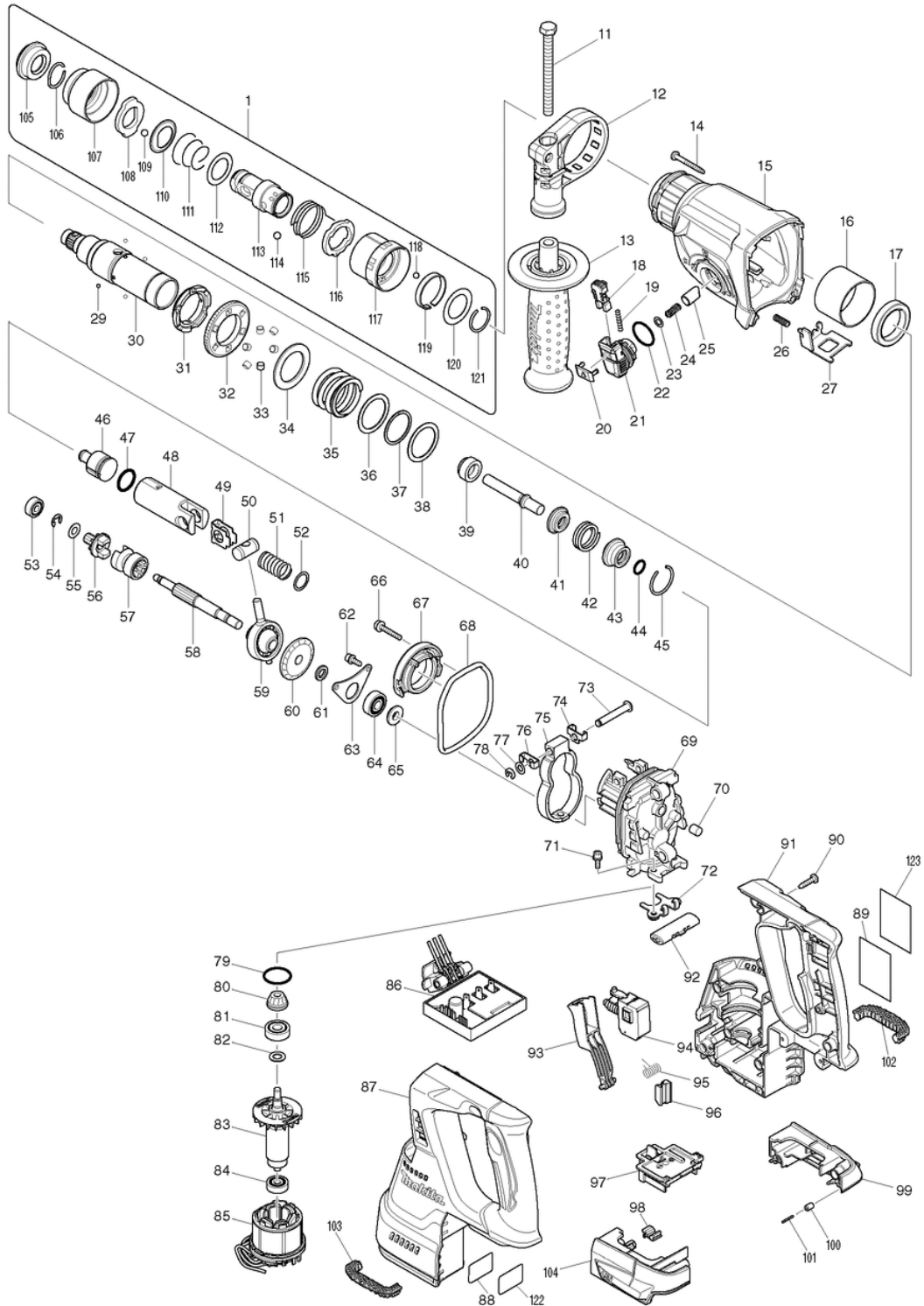
Tel: 02232 / 777 00

Fax: 02232 / 777 00 - 40

Mail: [verkauf@makita.at](mailto:verkauf@makita.at)

Web: [www.makita.at](http://www.makita.at)

## Makita Service Information / Model: DHR243





## Makita Werkzeug Ges.m.b.H.

Airportstr. 4, 2401 Fischamend

Tel: 02232 / 777 00

Fax: 02232 / 777 00 - 40

Mail: verkauf@makita.at

Web: www.makita.at

### Makita Service Information / Model: DHR243

POS	Bestell-Nr.	Artikelbeschreibung	Stk.	Stk.Preis
1	194080-7	TOOL HOLDER SET	1	N/A
1		*** INC. 105-121		N/A
11	266745-2	HEX. SOCKET HEAD BOLT M8x90	1	N/A
12	453129-5	GRIP BASE	1	N/A
13	158057-6	GRIP 36 COMPLETE	1	N/A
14	266351-3	SKRUTKA 4x35	4	N/A
15	141229-0	GEAR HOUSING COMPLETE	1	N/A
16	331890-3	NEEDLE BEARING COMPLETE	1	N/A
17	211294-4	BALL BEARING 6806LLU	1	N/A
18	454112-5	LOCKING BUTTON	1	N/A
19	234264-6	COMPRESSION SPRING 3	1	N/A
20	453131-8	CHANGE LEVER COVER	1	N/A
21	453125-3	CHANGE LEVER	1	N/A
22	213381-5	O-KRÚŽOK 21 HR3510/20	1	N/A
23	253308-3	THIN WASHER 6	1	N/A
24	234147-0	COMPRESSION SPRING 5	1	N/A
25	325785-0	PUSH Corn	1	N/A
26	233360-7	COMPRESSION SPRING 4	1	N/A
27	346537-6	LOCK PLATE BHR242	1	N/A
29	216019-1	GULKA OCELOVÁ 3	4	N/A
30	140266-1	TOOL HOLDER COMPLETE	1	N/A
31	313149-0	Driving Flange	1	N/A
31.2	332139-4	ANTRIEBSFLANSCH DHR243,HR2300	1	N/A
32	227232-6	SPUR GEAR 51	1	N/A
32.2	227360-7	ZAHNRAD 51 HR2300	1	N/A
33	268226-2	KOLÍK 6	6	N/A
34	267414-8	FLAT WASHER 30	1	N/A
35	234148-8	COMPRESSION SPRING 31	1	N/A
36	267153-0	FLAT WASHER 30	1	N/A
37	257932-4	SPIRO LOCK WASHER 30	1	N/A
38	267153-0	FLAT WASHER 30	1	N/A
39	325783-4	SLEEVE 9b	1	N/A
40	325791-5	IMPACT BOLT B	1	N/A
41	325792-3	WASHER 10	1	N/A
42	234149-6	COMPRESSION SPRING 20	1	N/A
43	325793-1	O Ring Case B	1	N/A
44	213073-6	O-KRÚŽOK 9 HR2440/2020/2450/F	1	N/A
45	233979-2	Ring Spring 28	1	N/A
46	326139-4	STRIKER	1	N/A
47	213258-4	O-KRÚŽOK 17,5	1	N/A



## Makita Werkzeug Ges.m.b.H.

Airportstr. 4, 2401 Fischamend

Tel: 02232 / 777 00

Fax: 02232 / 777 00 - 40

Mail: verkauf@makita.at

Web: www.makita.at

### Makita Service Information / Model: DHR243

POS	Bestell-Nr.	Artikelbeschreibung	Stk.	Stk.Preis
48	310345-1	PISTON CYLINDER	1	N/A
49	346036-8	GUIDE PLATE	1	N/A
50	324215-8	ČAP PIESTNY HR2020-2450/F	1	N/A
51	234098-7	COMPRESSION SPRING 14	1	N/A
52	267447-3	FLAT WASHER 14	1	N/A
53	211012-0	LOŽISKO GULIČKOVÉ 606ZZ	1	N/A
54	257336-0	STOP RING E-6	1	N/A
55	253186-1	PODLOŽKA 7 4300SV/SB/LH1040/F	1	N/A
56	227231-8	SPUR GEAR 10	1	N/A
57	331814-9	CLUTCH CAM	1	N/A
58	326140-9	CAM SHAFT	1	N/A
59	219020-5	SWASH BEARING 10	1	N/A
60	227588-7	SPIRAL BEVEL GEAR 32 COMPLETE	1	N/A
61	257323-9	RING 8	1	N/A
62	922118-6	HEX. SOCKET HEAD BOLT M4x12	2	N/A
63	346038-4	BEARING RETAINER B	1	N/A
64	211032-4	LOŽISKO GULIČKOVÉ 608ZZ	1	N/A
65	324212-4	KRÚŽOK 8	1	N/A
66	922147-9	INBUSOVÁ SKRUTKA 4X25 922147-9	2	N/A
67	141230-5	Inner Support Complete	1	N/A
68	213767-3	O RING 75	1	N/A
69	318810-4	INNER HOUSING COMPLETE	1	N/A
70	443153-6	FELT	1	N/A
71	922118-6	HEX. SOCKET HEAD BOLT M4x12	2	N/A
72	346536-8	BEARING RETAINER A	1	N/A
73	256536-9	FLAT FILLISTER HD PIN 6	1	N/A
74	346538-4	WEIGHT HOLDER GUIDE	1	N/A
75	313224-2	COUNTER WEIGHT	1	N/A
76	346538-4	WEIGHT HOLDER GUIDE	1	N/A
77	253726-5	PODLOŽKA 6	1	N/A
78	961018-5	STOP KRUZOK E-5	1	N/A
79	213008-7	O-KRÚŽOK 22.4 HR2510	1	N/A
80	141458-5	SPIRAL BEVEL GEAR 11 COMPLETE	1	N/A
81	210024-0	LOŽISKO GULIČKOVÉ 608 2RS	1	N/A
82	253835-0	PODLOŽKA JV2000/LS0714-Serie	1	N/A
83	619293-4	ROTOR R243	1	N/A
84	210022-4	LOŽISKO GULIČKOVÉ 626DDW 9910	1	N/A
85	629922-1	STATOR	1	N/A
86	620241-8	KONTAKTEINHEIT BHR243	1	N/A
87	187687-6	HOUSING SET	1	N/A



## Makita Werkzeug Ges.m.b.H.

Airportstr. 4, 2401 Fischamend

Tel: 02232 / 777 00

Fax: 02232 / 777 00 - 40

Mail: verkauf@makita.at

Web: www.makita.at

### Makita Service Information / Model: DHR243

POS	Bestell-Nr.	Artikelbeschreibung	Stk.	Stk.Preis
87		*** INC. 91		N/A
87.2	183A34-5	HOUSING SET	1	N/A
87.2		*** INC. 91		N/A
88	815B50-2	DHR243 SERIAL NO. LABEL	1	N/A
89	815B44-7	DHR243 NAME PLATE	1	N/A
90	266326-2	SKRUTKA SAMOREZNÁ	10	N/A
91	187687-6	HOUSING SET	1	N/A
91		*** INC. 87		N/A
91.2	183A34-5	HOUSING SET	1	N/A
91.2		*** INC. 87		N/A
92	453124-5	F/R Change Lever	1	N/A
93	453123-7	SWITCH LEVER	1	N/A
94	650709-0	SCHALTER C3JW-1-P BHR243	1	N/A
95	233598-4	TORSION SPRING 6	1	N/A
96	313226-8	OPENER	1	N/A
97	644808-8	ANSCHLUSSKLEMME	1	N/A
98	424476-1	CUSHION BHR242	1	N/A
99	187377-1	BATTERY HOUSING SET	1	N/A
99		*** INC. 104		N/A
100	263036-2	RUBBER PIN 5	1	N/A
101	268184-2	PIN 1,5	1	N/A
102	424473-7	CUSHION RUBBER BHR243	1	N/A
103	424473-7	CUSHION RUBBER BHR243	1	N/A
104	187377-1	BATTERY HOUSING SET	1	N/A
104		*** INC. 99		N/A
105	286263-4	VIEČKO 35 HR2440/2020/2450/F	1	N/A
106	233940-9	KRÚŽOK PRUŽNÝ 19	1	N/A
107	418217-5	Kryt skľučovadla	1	N/A
108	345333-9	DRŽIAK	1	N/A
109	216022-2	GULKA OCEĽOVÁ 7,0	1	N/A
110	345187-4	PODLOŽKA	1	N/A
111	233916-6	PRUŽINA KONICKÁ 21-29 HR2450	1	N/A
112	267279-8	PODLOŽKA 21	1	N/A
113	324355-2	DRŽIAK NÁSTROJA	1	N/A
114	216013-3	GULKA OCEĽOVÁ	2	N/A
115	231669-1	PRUŽINA TORZNÁ 31	1	N/A
116	345334-7	KRÚŽOK KOVOVÝ	1	N/A
117	418218-3	KRYT HLAVICE	1	N/A
118	216018-3	GULKA OCEĽOVÁ 5,0	1	N/A
119	345335-5	PRUŽINA LISTOVÁ	1	N/A



# Makita Werkzeug Ges.m.b.H.

Airportstr. 4, 2401 Fischamend

Tel: 02232 / 777 00

Fax: 02232 / 777 00 - 40

Mail: verkauf@makita.at

Web: www.makita.at

## Makita Service Information / Model: DHR243

POS	Bestell-Nr.	Artikelbeschreibung	Stk.	Stk.Preis
120	267270-6	PODLOŽKA 24 HR2450T	1	N/A
121	233924-7	PODLOŽKA PRUŽNÁ 21	1	N/A
122	893072-0	Claer Label	1	N/A
123	890994-5	NAME PLATE	1	N/A
1001	324219-0	DORAZ HLÁBKOVÝ	1	N/A
1002	194079-2	DRILL CHUCK SET	1	N/A
1003	***DC18RC	DC18RC FAST CHARGER	1	N/A
1003	821552-6	CONNECTOR PLASTIC CASE (TYPE4)	1	N/A
1004				N/A
1004	194204-5	BATTERY BL1830 SET	2	N/A
1004	837649-1	INNER TRAY	1	N/A
1004	196671-0	BATTERY BL1850 SET	2	N/A
1004.2	194204-5	BATTERY BL1830 SET	2	N/A
1004.2	196399-0	AKKU-MAGAZIN BL1840 18V 4,0Ah	2	N/A
1004.2	196671-0	BATTERY BL1850 SET	2	N/A
1005	450128-8	BATTERY COVER	1	N/A
1005	802M30-3	DHR243ZJ INDICATION LABEL	1	N/A
1006	141401-4	PLASTIC CASE COMPLETE	1	N/A
1006	821552-6	CONNECTOR PLASTIC CASE (TYPE4)	1	N/A
1006	802M33-7	DHR243ZJ PLASTIC CASE LABEL	2	N/A
1007	802M42-6	DHR243RFE PLASTIC CASE LABEL	2	N/A
1007	837649-1	INNER TRAY	1	N/A
1007	837677-6	INNER TRAY	1	N/A
1007	802M36-1	DHR243RME PLASTIC CASE LABEL	2	N/A
1007	804H95-1	DHR243RTE PLASTIC CASE LABEL	2	N/A
1008	802M29-8	DHR243RFJ INDICATION LABEL	1	N/A
1008	802M31-1	DHR243RFJV INDICATION LABEL	1	N/A
1008	802M47-6	DHR243RMJ INDICATION LABEL	1	N/A
1008	802M50-7	DHR243RMJV INDICATION LABEL	1	N/A
1009	802M32-9	DHR243RFJ PLASTIC CASE LABEL	2	N/A
1009	802M34-5	DHR243RFJV PLASTIC CASE LABEL	2	N/A
1009	802M48-4	DHR243RMJ PLASTIC CASE LABEL	2	N/A
1009	802M51-5	DHR243RMJV PLASTIC CASE LABEL	2	N/A
1010	***DX02	DUST EXTRACTION SYSTEM	1	N/A
1010		*** COMPO-PARTS		N/A
1010		*** INC. A11		N/A
1011	424474-5	SEALING CAP	5	N/A